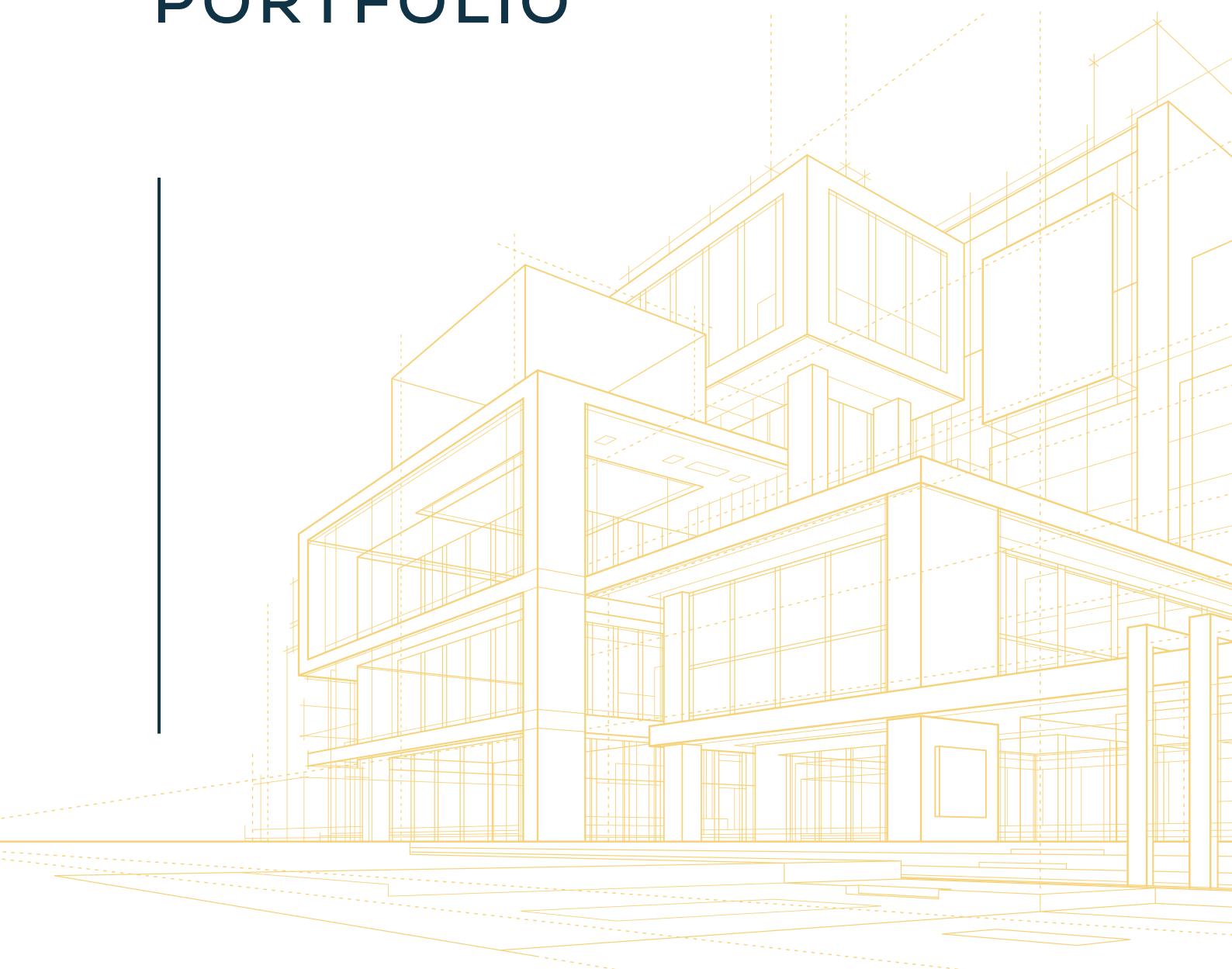




# PROFILE & PORTFOLIO



# TABLE OF CONTENTS

---

**01**

## **ABOUT US**

*Who We Are*

**02**

## **MISSION AND VALUES**

*Our Core Beliefs*

**03**

## **OUR EXPERTISE**

*Our Skills and Industries Served*

**04**

## **HOW WE WORK**

*Our Design Philosophy*

**05**

## **OUR PROCESS**

*Our Process from Concept to Reality*

**06**

## **SERVICES WE OFFER**

*Comprehensive Solutions*

**07**

## **OUR PROJECTS**

*Our Notable Works*



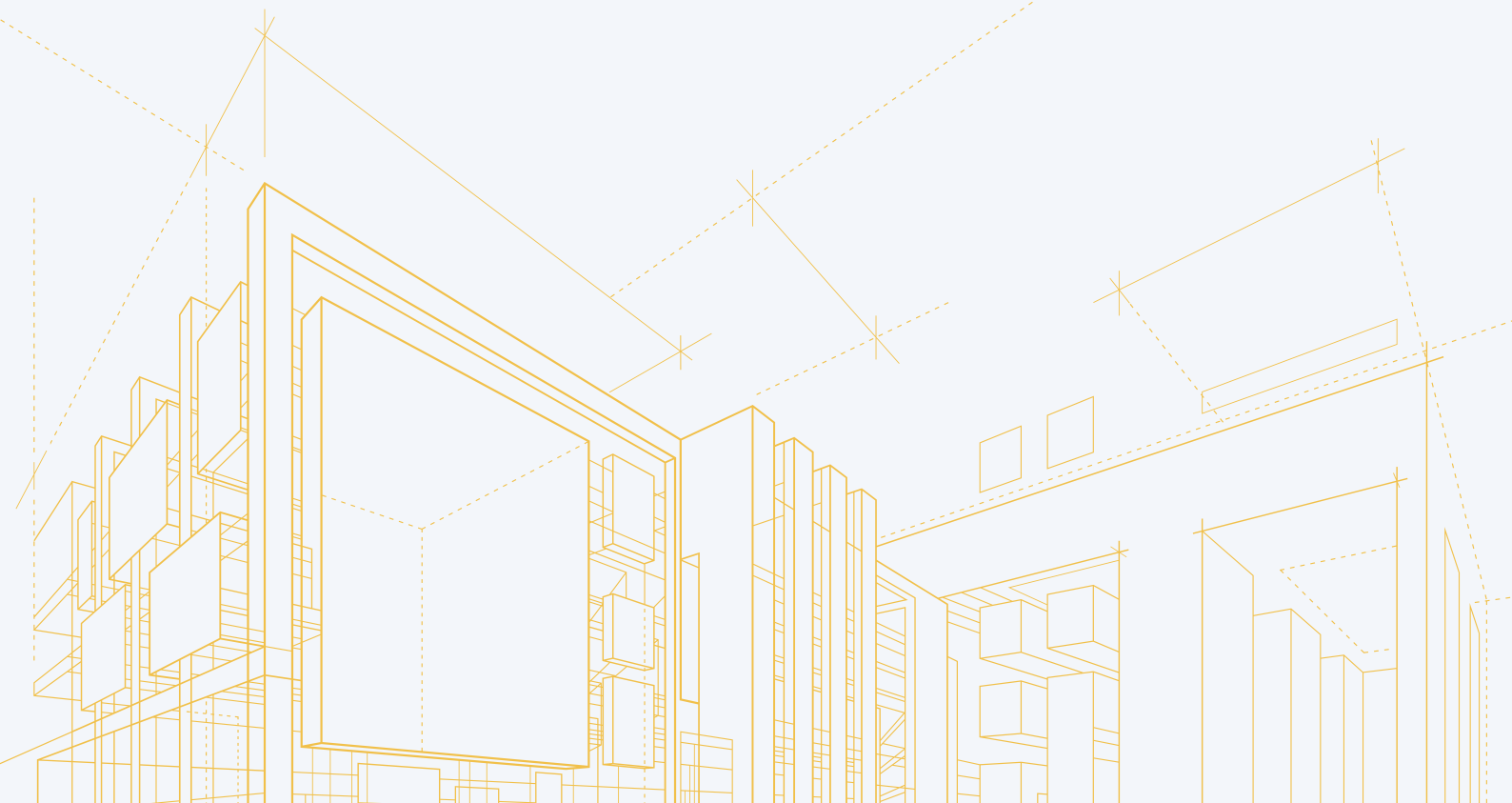
# ABOUT US

Leedhaus is a fully licensed Construction and Project Management firm with over eight years of proven expertise across Dubai, Pakistan, and the Philippines.

We specialize in ground-up construction, interior renovations and design, extensions, and bespoke interior fit-outs—delivering projects that balance form, function, and exceptional craftsmanship.

Backed by ISO 9001:2015 certification for quality management, as well as rigorous health, safety, and environmental standards, we are committed to excellence at every stage. Our competitive edge lies in offering outstanding value without compromising on the high standards that define the construction industry.

At Leedhaus, we don't just build spaces—we bring visions to life with precision, integrity, and innovation.





# MISSION AND VALUES

*At Leedhaus, our mission is to deliver first-rate design and construction solutions that go beyond functionality, economy, and aesthetics. We aim to create spaces that serve our clients today and continue to add value for years to come.*

## **EXCELLENCE IN EXECUTION**

- 1 From concept to completion, we uphold the highest standards of quality, craftsmanship, and project management.

## **PURPOSEFUL AESTHETICS**

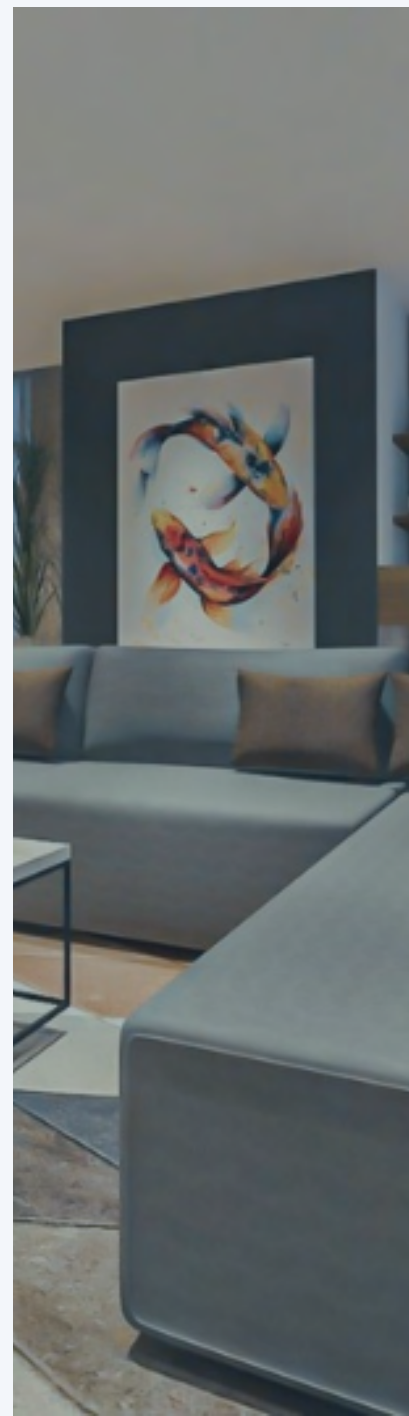
- 2 Our work is driven by design that is not only beautiful but also purposeful, enhancing both form and function.

## **VALUE-DRIVEN SOLUTIONS**

- 3 We are committed to providing exceptional results that align with our clients' goals and budgets.

## **CLIENT COLLABORATION**

- 4 We deliver great results through strong collaboration, open communication, and adaptability to client needs.





# OUR EXPERTISE

## *INDUSTRIES SERVED*

Co-working Spaces. Commercial. Residential. Retail.

## *CORE-SKILLS*

Design conceptualization, space planning, 3D modeling, drafting, project coordination, and proficiency in AutoCAD, SketchUp, Revit, and Adobe Creative Suite.



# HOW WE WORK

## *OUR DESIGN PHILOPHY*

Design impacts our lives in both subtle and obvious ways—from the phones we use to the coffee pots we brew with, to the spaces we live and work in. Every object and environment is shaped by design. But true appreciation begins when we interact with them. It's through use that we discover the thoughtful details—both visible and hidden—that define great design.

# OUR PROCESS

FROM CONCEPT TO REALITY

## INITIAL CONSULTATION

The process begins with a scheduled consultation via our website, email, or phone. During this session, we'll discuss your project's goals, requirements, timeline, and budget to better understand your vision.

## PROPOSAL SUBMISSION

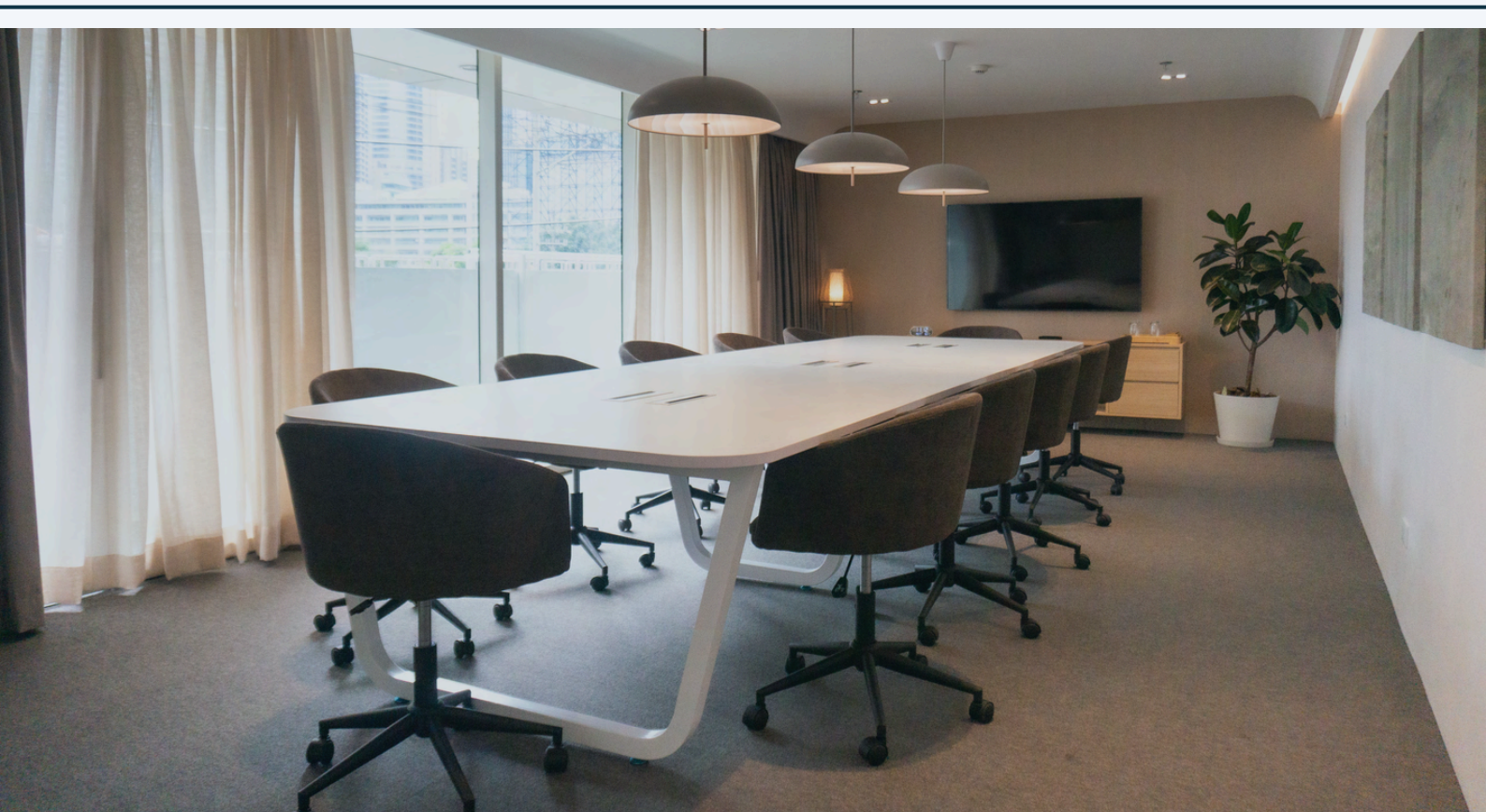
Following the consultation, we'll prepare a comprehensive proposal. This will include our suggested approach, scope of work, estimated timeline, deliverables, and cost.

## DETAILED PLANNING

Once the proposal is approved, we move into the planning phase. Here, we work closely with you to finalize design preferences, brand guidelines, content needs, and any project-specific details.

## EXECUTION AND FEEDBACK

With a clear plan in place, we begin execution. We maintain regular communication and updates throughout, inviting your feedback to ensure the final output aligns perfectly with your expectations.





# SERVICES WE OFFER



## Space Planning

Efficient layout strategies that optimize flow, comfort, and functionality.



## Architectural Design

Creative and technical solutions for residential, commercial, and mixed-use developments.



## Interior Design

Thoughtfully crafted interior spaces tailored to function, style, and user needs.



## 3D Visualization

Realistic renderings and walkthroughs to bring concepts to life before execution.



## Design Development

Refinement of design concepts with material selection, detailing, and technical coordination.



## Construction Drawings

Detailed documentation for permits, bidding, and on-site implementation.

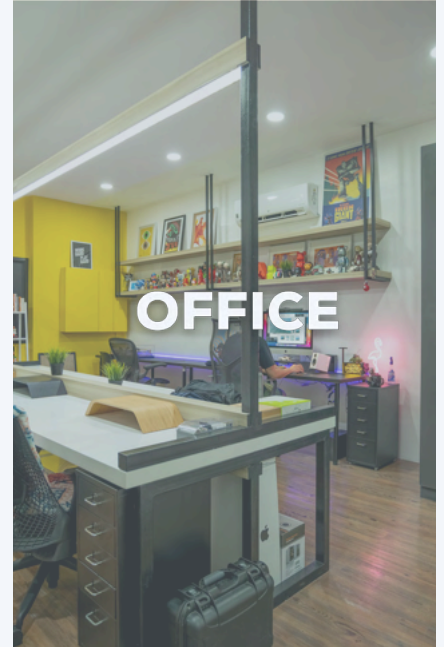


## Project Management

End-to-end oversight of timelines, resources, and execution to ensure project success.



# OUR PROJECTS





# REGUS AMA TOWER RESIDENCES

---



---

**Project Location:** AMA Tower Residences

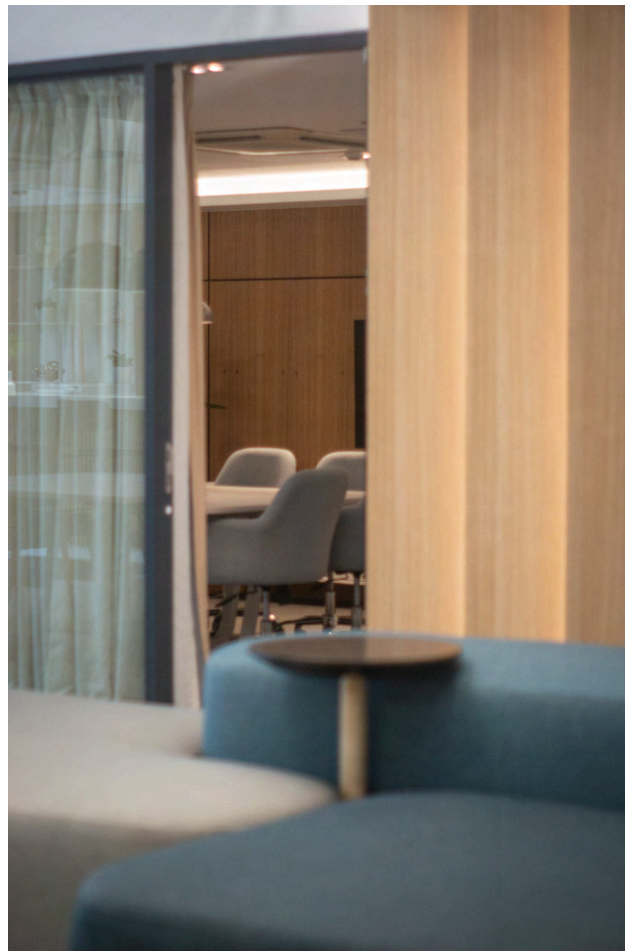
*A flexible and modern coworking space with smart details, flexible layouts, and a future-forward feel.*

A professional workspace interior that balances functionality and contemporary design for a dynamic coworking experience.

---













# TWO-STOREY HOUSE RENOVATION

---



---

**Project Location:** Hillsborough, Alabang

*A sleek facade with simple geometric forms and clean finishes, complemented by limited architectural details and landscaping.*



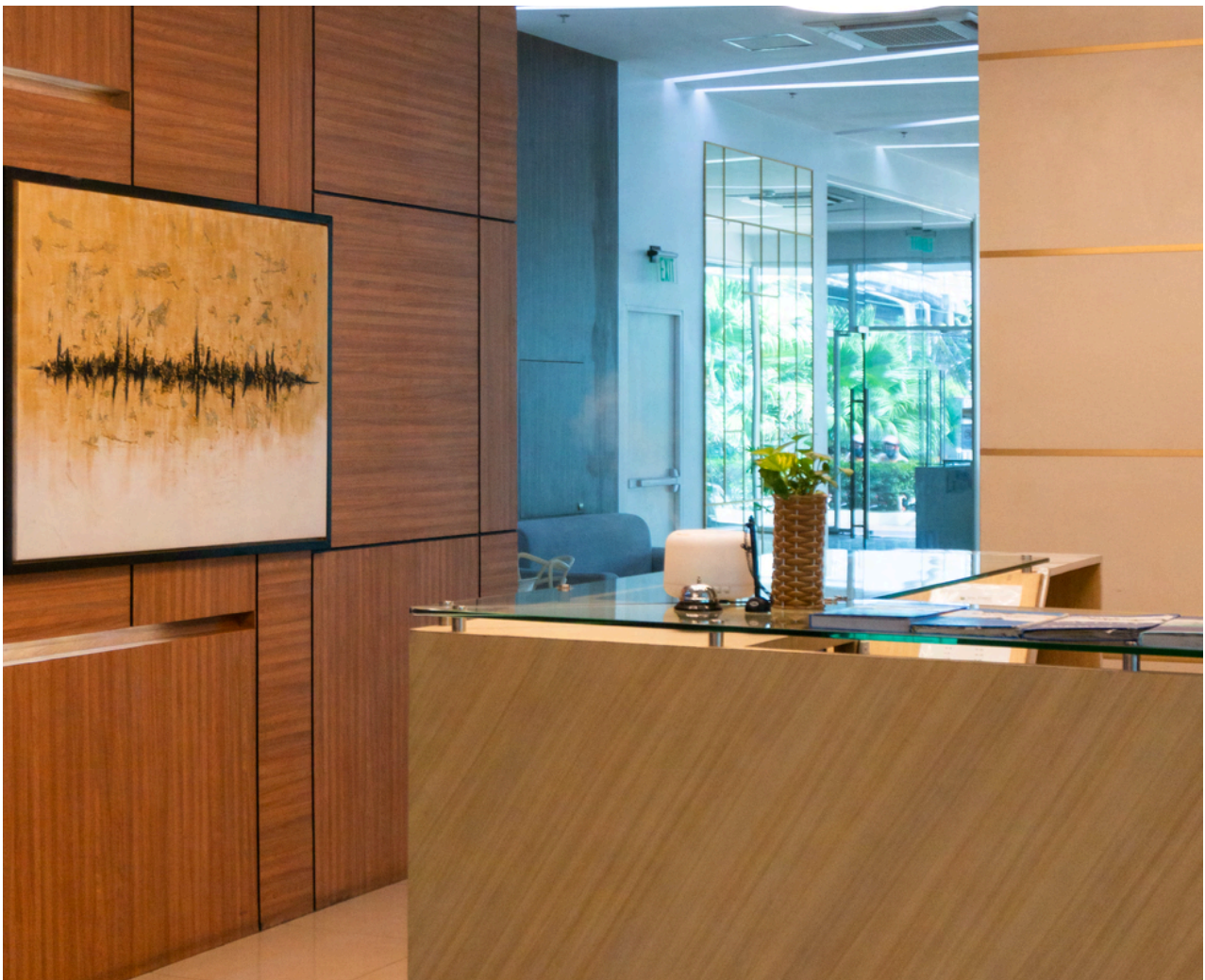






# AMA TOWER RESIDENCES LOBBY

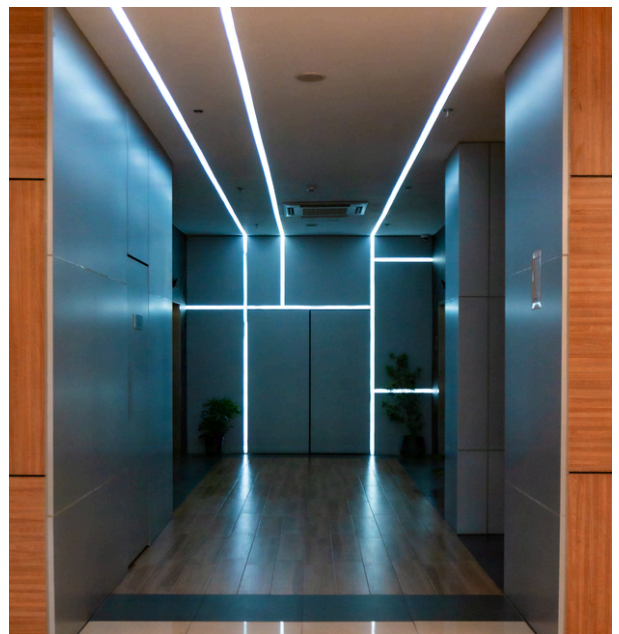
---



**Project Location:** AMA Tower Residences

*A sleek and modern lobby, designed with minimalist finishes, warm lighting, and refined material textures to welcome residents with elegance and comfort.*







A thoughtfully designed lobby featuring a streamlined mail room and comfortable seating that welcomes residents with both convenience and style.

---



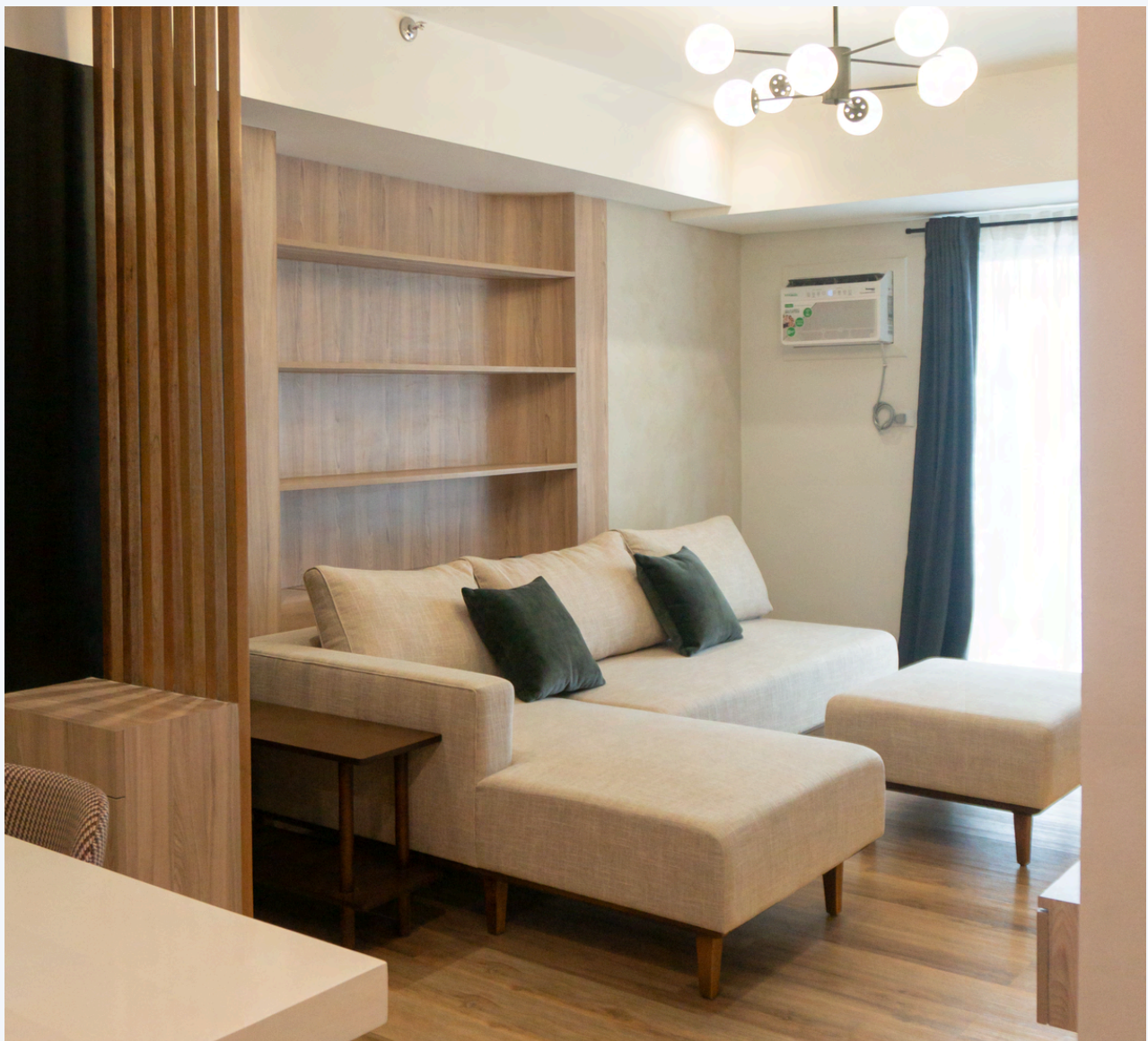


# 1-BR CONDO UNIT INTERIOR FIT-OUT WORKS

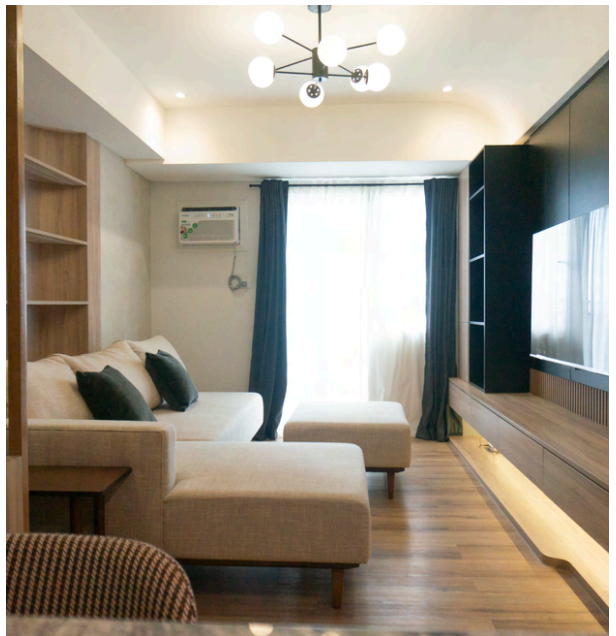
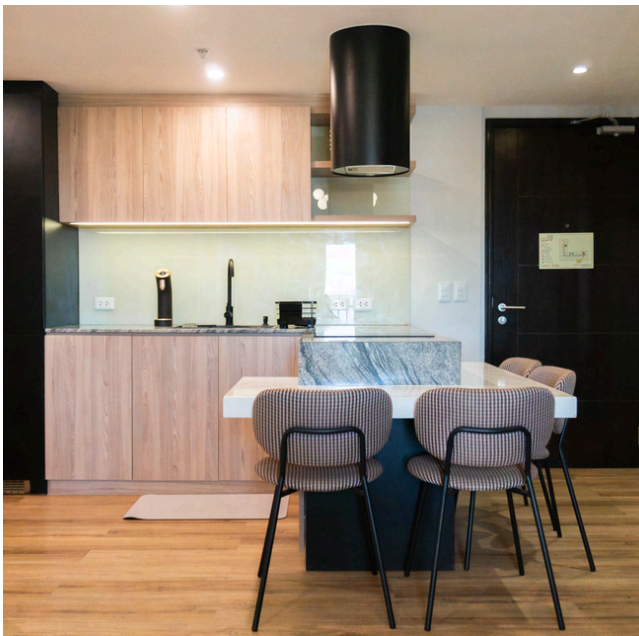
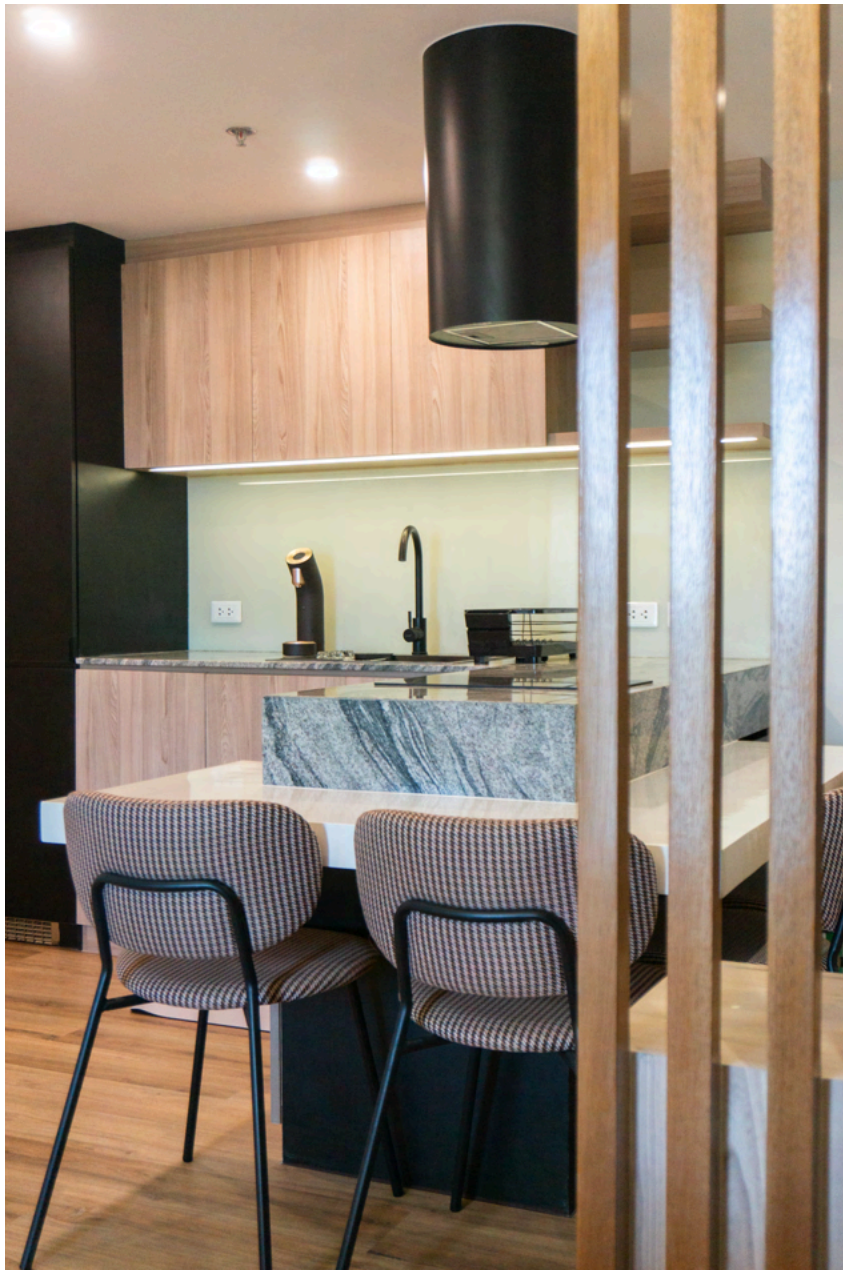
## Project Location:

Avida Towers Sola, Vertis North

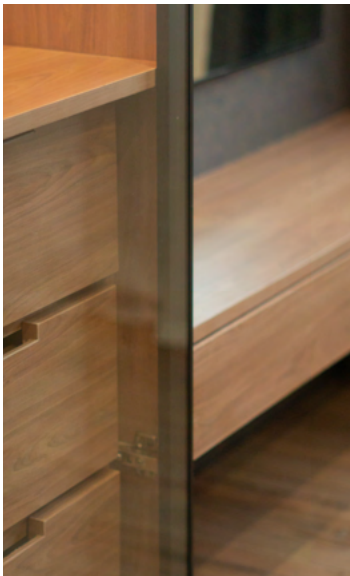
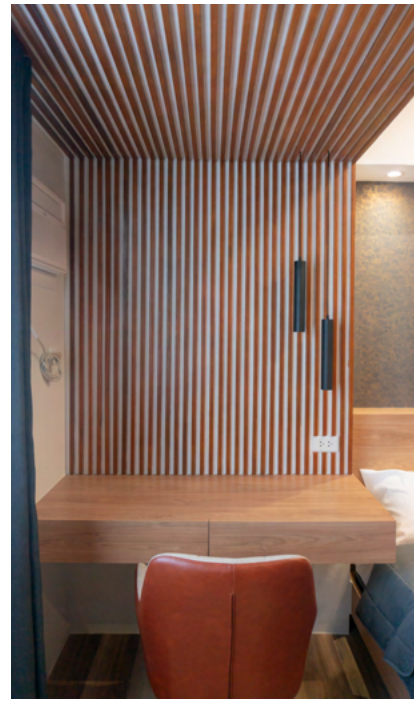
*Designed with comfort, style, and space efficiency in mind to elevate modern urban living in a compact one-bedroom unit.*















## 1-BR CONDO UNIT INTERIOR FIT-OUT WORKS

**Project Location:** The Rise, Makati

*In compact living, every inch counts, and each element plays a crucial role in shaping the atmosphere. Here, the dual purpose of furniture isn't just about practicality—it's a story of versatility and adaptability.*





# TWO-BEDROOM INTERIOR FIT-OUT

---

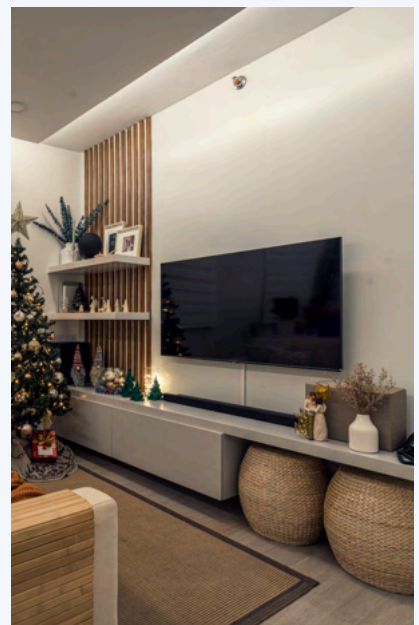
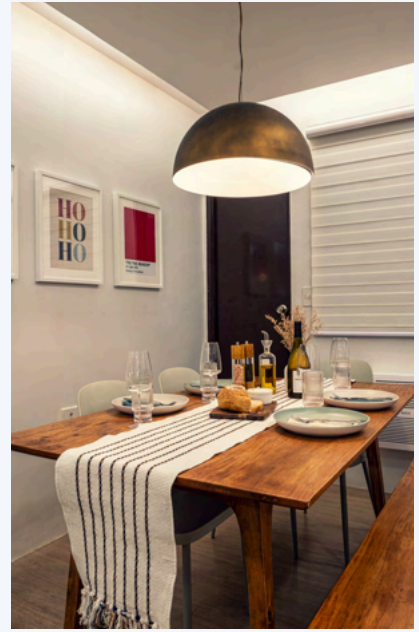


---

**Project Location:** Asia Enclaves, Alabang

*A two-bedroom unit designed and built with a warm minimalist approach, featuring soft tones, custom storage, and a calm, inviting atmosphere tailored for everyday living.*

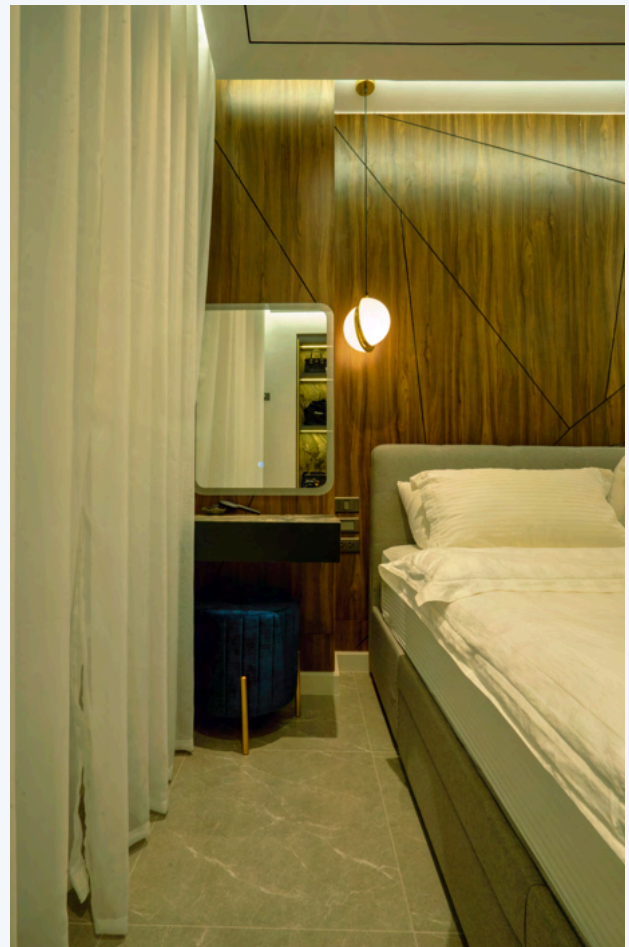






# 1-BR CONDOMINIUM RENOVATION

---



---

**Project Location:** La Vie Flats, Alabang, Muntinlupa City

*A sleek and space-efficient interior fit-out for a 1-bedroom unit, blending modern finishes with functional design for compact urban living.*

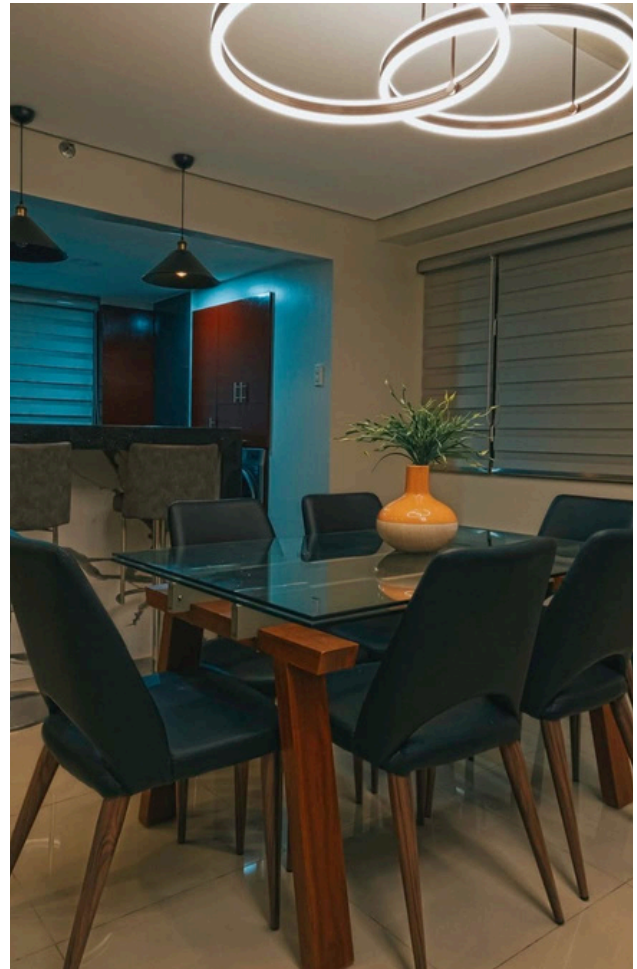






# TUSCANY PRIVATE ESTATES INTERIOR FIT-OUT

---



---

**Project Location:** McKinley Hill, Taguig City

*A warm and contemporary two-bedroom condominium unit featuring an open-plan layout, modern lighting, and a bold red accent that adds character to the neutral-toned interior.*











# ALIVE OFFICE RENOVATION

---



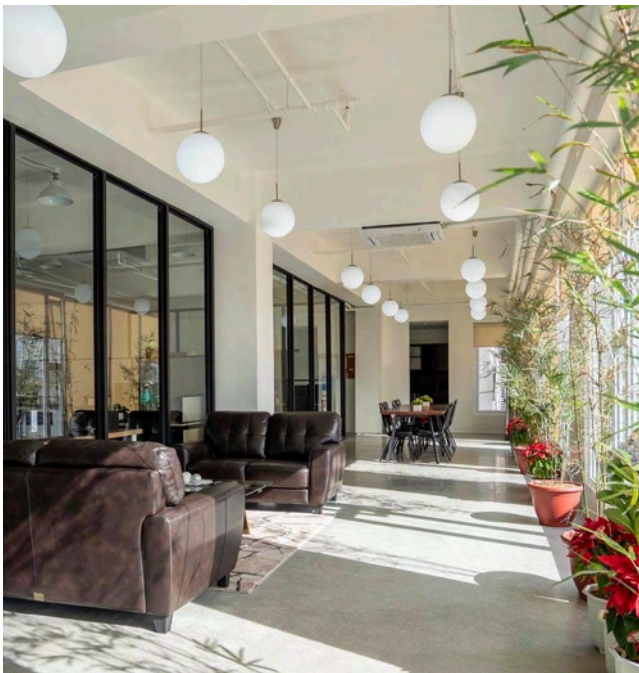
---

**Project Location:** Maginhawa, Quezon City

*A playful and vibrant office renovation that fuses bold color blocking, personalized decor, and practical workspace planning to energize creativity and collaboration.*





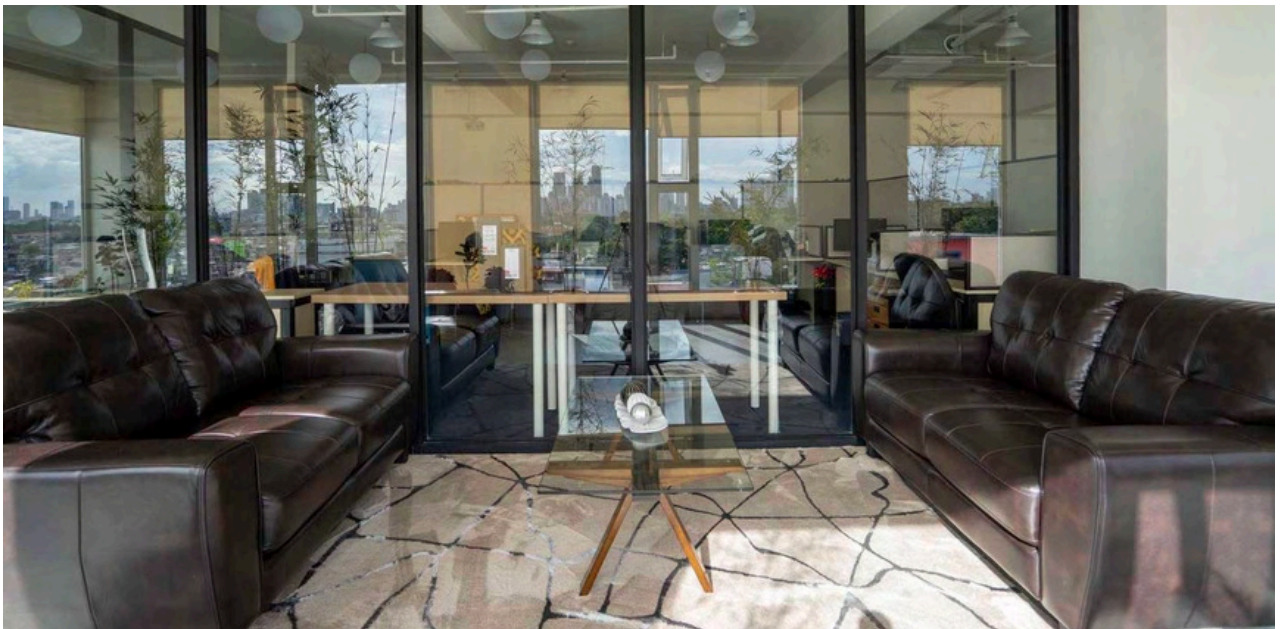
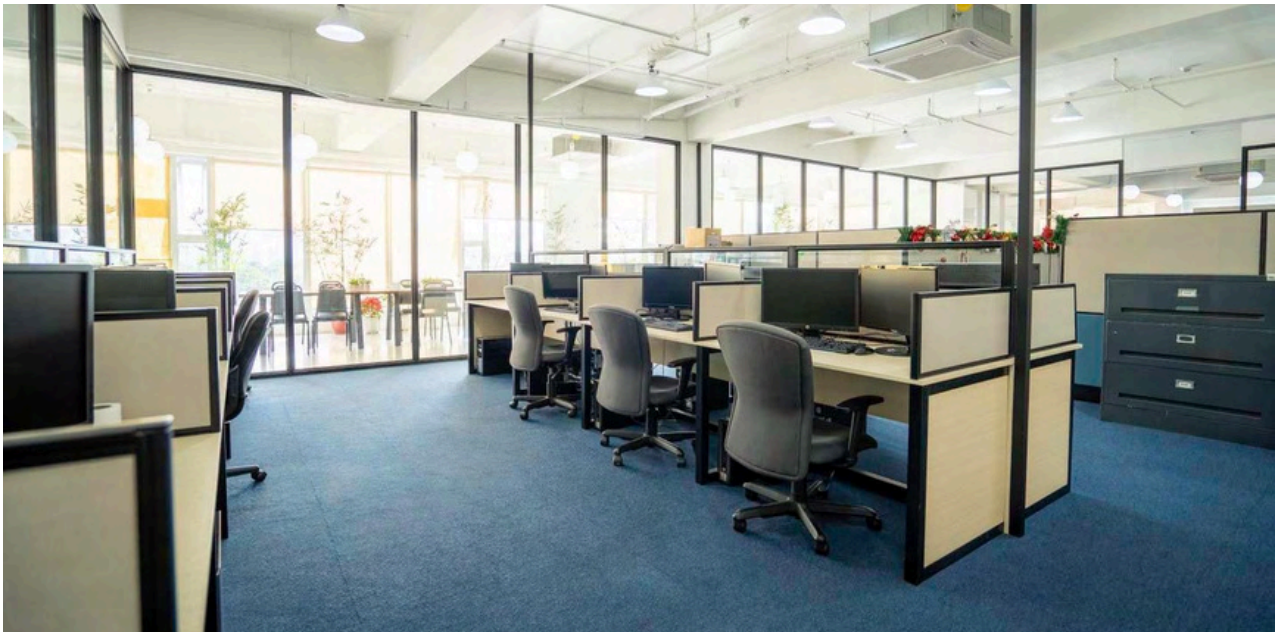


## VIDALIA OFFICE INTERIOR FIT-OUT

**Project Location:** Mandaluyong

*A contemporary corporate office designed for Vidalia Lending Corp., combining clean lines, natural light, and modern furnishings to create a professional yet welcoming work environment.*







# AIR MASTER COMMERCIAL RETAIL

---



---

**Project Location:** SM North Edsa, Quezon City

*A sleek and modern retail store for Air Master, designed with bold geometry, integrated lighting, and a clean display system to highlight air purification technologies in a futuristic setting.*







## CONTACT US



09278709634



[Info@leedhaus.com](mailto:Info@leedhaus.com)



[leedhaus.com](http://leedhaus.com)

